



OPERATING PROCEDURE

IMEC HP150A PLUS - HIGH PRESSURE JET



YOUR HYGIENE PARTNER

SERVICE HOTLINE

+603 8734 9255

+6016 380 2999

technical@imec.com.my



PREPARATION BEFORE START THE MACHINE

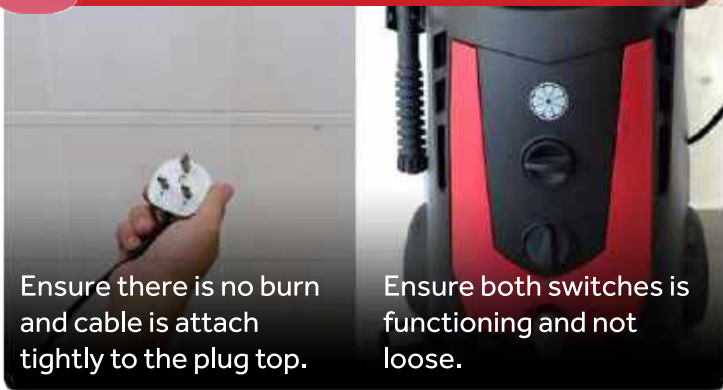
1

Prepare all the accessories needed



2

Check SWITCH & PLUG TOP



Ensure there is no burn and cable is attach tightly to the plug top.

Ensure both switches is functioning and not loose.

3

Assemble ACCESSORIES



Pull out the hose reel to lengthen the pressure hose.

Insert pressure gun to pressure hose.

Insert pressure lance or turbo lance to pressure gun.

4



Connect water hose to machine & water tap.

Pour detergent to solution tank if needed and close the cover when done.

5

Turn ON machine



2 Turn on the power outlet.

1 Insert the plug top to the electric socket.

3 Switch on the power.

4 Switch on detergent tank according to tank has detergent (when needed)

6



5 Push forward the pressure lance to release detergent and push backward to release water.

7



6 Use turbo lance for heavy stain cleaning.



OPERATING PROCEDURE

IMEC HP150A PLUS - HIGH PRESSURE JET



YOUR HYGIENE PARTNER



SERVICE HOTLINE

+603 8734 9255

+6016 380 2999

technical@imec.com.my

8



9

During OPERATION



- ✓ Make sure there is no large debris & sharp object on floor.
- ✓ Power cable must behind machine.
- ✓ Water supply pressure must strong enough.
- ✓ Do not shoot water at machine.
- ✓ Do not adjust the spray mode during spraying.
(Release the trigger, adjust the nozzle then only press back the trigger to continue)

AFTER USE THE MACHINE

10

Turn OFF Machine



11

Uninstall ACCESSORIES



12

Clean ACCESSORIES



13

