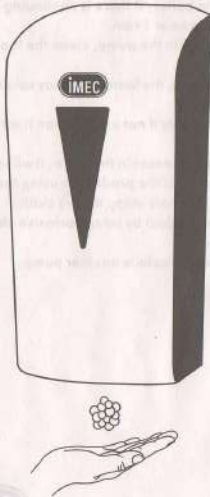


## USER MANUAL

### AUTOMATIC FOAM SOAP DISPENSER



## SPECIFICATION & PRODUCT FEATURES

This dispenser adopted the high-class electrical touch less control technology, by using alkaline batteries. Automatic foam soap dispenser with plate design which can fixed on the wall. This product has many advantages like working safely, high sensitivity etc. Auto foam dispenser avoids hand touch and mutual infection. Low energy consumption circuit board design with long battery life span usage provide best choice for hotels, restaurants, hospitals, schools and buildings.

SPECIFICATION	
SIZE	145(L)x140(W)x280(H)mm
VOLUME	1000ml
DOSEAGE	0.5ml
WEIGHT	1005g
MATERIAL	ABS
BATTERY	4pcs alkaline battery size C

### PRODUCT FEATURES

- 1) Selecting raw material and the whole industrial manufacturing processes is absolutely in accordance with the international standards, There is no toxic, contaminated radioactive material, which is the real green energy saving product.
- 2) Through a special manufacturing process, the pumps gain the international patent, which can make sure the 300 thousand dispense. This product have perfect mould that will never leak.
- 3) With key special design makes the body and back joint together. Fully concealed cover convenient installation in the wall space saving. Suitable

## USING METHOD

- 1) The product is suitable for home or commercial and industrial usage
- 2) When installing the dispenser, please make sure the distance under the dispenser is at least 40cm.
- 3) Choose a suitable place for installation; make sure it is not in moisture environment.
- 4) Don't put the dispenser on the opposite side of a mirror, or under the water.
- 5) Don't put it under strong light; it will damage the infrared sensor.
- 6) Can't use the high concentrations of foam soap.
- 7) Please use the right concentrations of liquid; otherwise it can cause no foam soap come out or little.
- 8) The dispenser uses 4pcs 1.5V battery (suggested the alkaline battery) the product has low power warning, when you find the LED light keep flashing, that means the battery is almost use up, please change the new battery.
- 9) No obstacles around 14cm area under the sensor.
- 10) The machine is sensor; just put your hand under the pump no more than 10cm distance.
- 11) If the machine is not working:
  - a. Put your hands near the detector
  - b. Re-check your battery
  - c. The switch is on or not
  - d. Check the underside of the dispenser, if there are lots of light and inverted image, please put the dispenser to a higher place.
- 12) If no foam soap dropped:
  - a. If first time using, the foam soap doesn't reach the pump, please try many times until the sanitizer come out
  - b. In lower temperature weather in winter, the sanitizer might become solid, please pull some 60 degrees water. Wait a few minutes, try many times
  - c. The foam soap is not enough

## INSTALLATION STEPS



### STEP 1

Open front cover with key provided.



### STEP 2

Put out the pump fixed plate.



### STEP 3

Remove the container.



### STEP 4

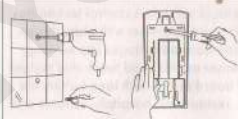
Remove the support base.



### STEP 5

Locate dispenser on wall and mark screw holes.

## INSTALLATION STEPS



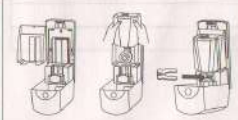
### STEP 6

Drill holes on marked area and insert rubber plug into the holes.  
Install dispenser and tighten screws.



### STEP 7

Put in 4 pcs 1.5V battery.



### STEP 8

Fix the support base, container and pump fixed plate.



### STEP 9

Pour IMEC 525 Foam Soap into the container.



### STEP 10

Close cover and lock it.  
Remove the key

## NOTES AND MAINTENANCE

- 1) Please add the foam soap if the volume is lower than 1cm.
- 2) The valid distance for the machine is about 10cm.
- 3) Please replace the battery if there is continuing beep sound even there is no obstacle near 14cm.
- 4) Avoid anything stuck in the pump, clean the foam without any impurity.
- 5) Please use it frequently, the foam soap may solidify if long time no use
- 6) Clean the product:
  - a. Keep the bottle empty if not using, clean it with cloth and take out the battery
  - b. Don't clean the dispenser in the water, it will damage the PCB
  - c. Cleaning the cover of the product by using the wet and dry cloth, clean the battery box only using the dry cloth.
  - d. Don't clean the product by using corrosive chemicals, in case the cover is damaged
- 7) If it is leaking, please replace another pump.