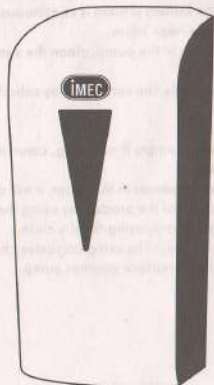


## USER MANUAL

## SPECIFICATION & PRODUCT FEATURES

## USING METHOD

### AUTOMATIC SPRAY SANITIZER DISPENSER



spray pump

Please read user manual carefully before using

This dispenser adopted the high-class electrical touch less control technology, by using alkaline batteries. Automatic spray sanitizer dispenser with plate design which can fixed on the wall. This product has many advantages like working safely, high sensitivity etc. Auto spray dispenser avoids hand touch and mutual infection. Low energy consumption circuit board design with long battery life span usage provide best choice for hotels, restaurants, hospitals, schools and buildings.

SPECIFICATION	
SIZE	145(L)x140(W)x280(H)mm
VOLUME	1000ml
DOSAGE	0.4ml
WEIGHT	1005g
MATERIAL	ABS
BATTERY	4pcs alkaline battery size C

#### PRODUCT FEATURES

- 1) Selecting raw material and the whole industrial manufacturing processes is absolutely in accordance with the International standards. There is no toxic and contaminated radioactive material, which is the real green energy saving product.
- 2) Through a special manufacturing process, the pumps gain the international patent, which ensure 300 thousand spray. This product has perfect mould that will never leak.
- 3) Special design makes the body and back joint together. Fully sealed cover prevent water sipping in, that will cause mildew. Suitable for use in public area.
- 4) The products are combined with many different separated parts, it is easy to disassemble, and you can replace any broken parts.
- 5) The product is designed with drop-like cover; you can put it on the table or mount it on the wall.

- 1) The product is suitable for home or commercial and industrial used.
- 2) When installing the dispenser, please make sure the distance under the dispenser is at least 40cm.
- 3) Choose a suitable place for installation; make sure it is not in moisture environment.
- 4) Don't put the dispenser on the opposite side of a mirror, or under the water.
- 5) Don't put it under strong light; it will damage the infrared sensor.
- 6) Can't use the high concentrations of sanitizer.
- 7) Please use the right concentrations of sanitizer; otherwise it will not be able to dispense accordingly.
- 8) The dispenser uses 4pcs 1.5V battery (suggested the alkaline battery) the product has low power warning, when you find the LED light keep flashing, that means the battery is almost use up, please change the new battery.
- 9) No obstacles around 14cm area under the sensor.
- 10) The machine is sensor; just put your hand under the pump no more than 10cm distance.
- 11) If the machine is not working:
  - a. Put your hands near the detector
  - b. Re-check your battery
  - c. The switch is on or not
  - d. Check the underside of the dispenser, if there are lots of light and inverted image, please put the dispenser to a higher place.
- 12) If no sanitizer dropped:
  - a. If first time using, the sanitizer doesn't reach the pump, please try many times until the sanitizer come out
  - b. In lower temperature weather in winter, the sanitizer might become solid, please pull some 60 degrees water. Wait a few minutes, try many times
  - c. The sanitizer is not enough

## INSTALLATION STEPS

## INSTALLATION STEPS

## NOTES AND MAINTENANCE



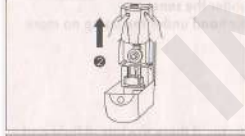
### STEP 1

Open front cover with key provided.



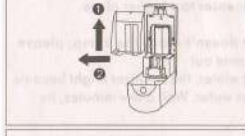
### STEP 2

Pull out the pump fixed plate based on the arrow.



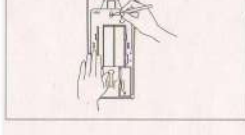
### STEP 3

Remove the container.



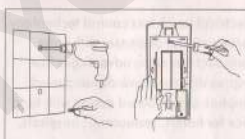
### STEP 4

Remove the support base.



### STEP 5

Locate dispenser on wall and mark screw holes.



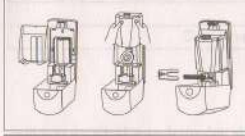
### STEP 6

Drill holes on marked area and insert rubber plug into the holes.  
Install dispenser and tighten screws.



### STEP 7

Put in 4 pcs 1.5V battery.



### STEP 8

Fix the support base, container and pump fixed plate.



### STEP 9

Pour IMEC 5B5S into the container.



### STEP 10

Close cover and lock it.  
Remove the key

- 1) Please add IMEC 5B5S refill if the volume is lower than 1cm.
- 2) The valid distance for the machine is about 10cm.
- 3) Please replace the battery if there is continuous beep sound even there is no obstacle near 14cm.
- 4) Avoid anything stuck in the pump, clean the sanitizer without any impurity.
- 5) Please use it frequently, the sanitizer may solidify if long time no use.
- 6) Clean the product:
  - a. Keep the container empty if not using, clean it with cloth and remove the battery
  - b. Don't clean the dispenser in the water, it will damage the PCB
  - c. Cleaning the cover of the product by using the wet and dry cloth, clean the battery box only using the dry cloth.
  - d. Don't clean the product by using corrosive chemicals.
- 7) If it is leaking, please replace another pump.