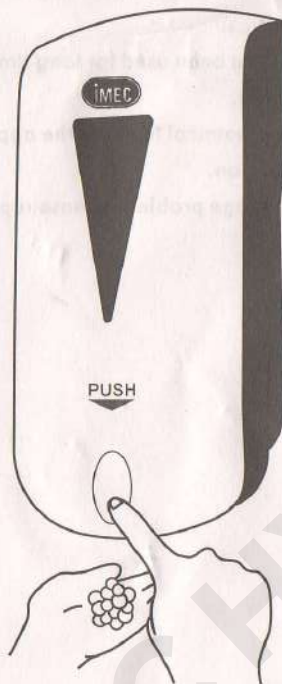


## USER MANUAL

### MANUAL FOAM SOAP DISPENSER



Please read user manual carefully before using

## SPECIFICATION & PRODUCT FEATURES

Keeping hands clean is more important now than ever. IMEC Manual Foam Soap Dispenser manually delivers just the right amount of foam soap with a gentle press on the push button. This innovative bathroom solution has a unique patent design with user friendly features. It is well known for its smooth push button, durable feature and cost-effective foam usage. This product is suitable for home or commercial and industrial usage.

SPECIFICATION	
SIZE	115(L)x110(W)x245(H)mm
VOLUME	1000ml
DOSAGE	0.5ml
WEIGHT	469g
MATERIAL	ABS

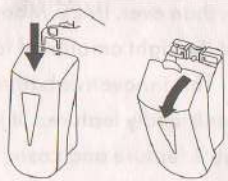
### PRODUCT FEATURES

- 1) This product has been built with large capacity of 1000ml and a controlled dose of 0.5ml which eliminates over use.
- 2) Energy conservation avoids induction leakage to the soap dispenser.
- 3) This product is composed from plurality of separate components which is easy to assemble.
- 4) This product is made from durable, impact-resistant ABS material.
- 5) Safety features have been implemented where product can be locked to prevent vandalism.

## INSTALLATION STEPS

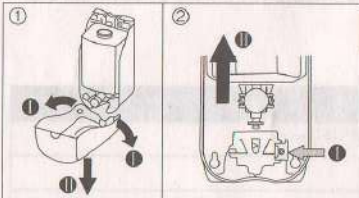
### STEP 1

Use the supplied key to open the front cover.



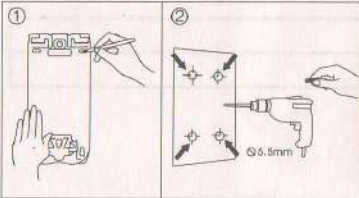
### STEP 2

1) Direction of the arrow to the front  
2) Push the pump head to the left hand button, and then take out the bottle.



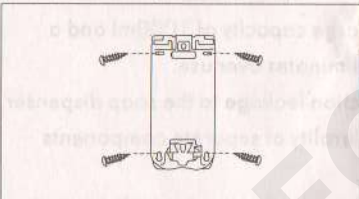
### STEP 3

1) Locate dispenser on wall and mark screw holes.  
2) Drill holes on marked area and insert the rubber plug into the holes



### STEP 4

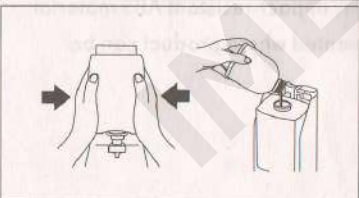
Install dispenser and tighten screws.



### STEP 5

Place the container and pour IMEC 525 Foam Soap into it.

Fix front cover and close it.



## NOTES & MAINTENANCE

- 1) If you find that the container is dirty and has debris, rinse the container and replace IMEC 525 Foam to prevent any objects blocking the fluid orifice.
- 2) If the foam soap has not been used for long time; the foam soap may be solidified agent.
- 3) Do not use corrosive chemical to avoid the appearance of surface damage and deformation.
- 4) If the product has leakage problem, please replace the pump head.