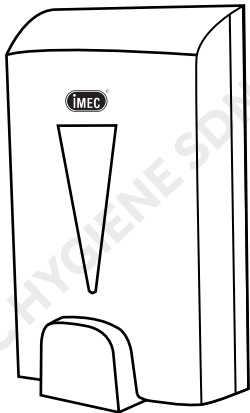




USER MANUAL

IMEC IR1000P SOAP DISPENSER



Code: 300-1009-P

Please read user manual carefull before using.

Product Features

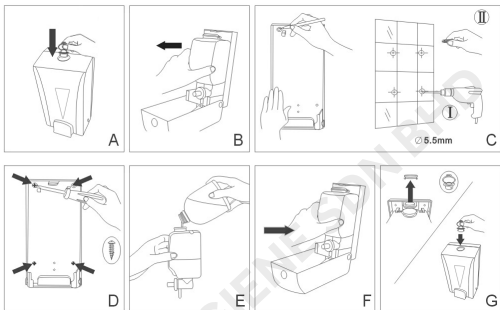


- 1) Compact leakage-free design
- 2) Easy press dispenser button
- 3) Highly durable with enhanced TOI-PUMP System for long term usage
- 4) Quick and easy to refill
- 5) Clear sight window for quick soap level check
- 6) Suitable for any bathroom, toilet, kitchen & laundry room

Specifications

Dimensions	L120 x W100 x H223 mm
Capacity	1000 ml
Fluid Volume	1.8 ml
Weight	457 g
Material	ABS

Operation icon



Step 1 - As shown in Figure A, one hand is needed to hold the dispenser then use another hand to open the lock by using the supplied key.

Step 2 - As shown in Figure B, take out the bottle from the dispenser.

Step 3 - As shown in Figure C, use the back casing as template to mark the wall. Use pen for marking. Drill the holes and stuff the holes with supplied stopper.

Step 4 - As shown in Figure D, use the supplied screw to install and fasten the dispenser on the wall.

Step 5 - As shown in Figure E, pour liquid soap into the bottle.

Step 6 - As shown in Figure F, put back the bottle into the dispenser.



Step 7 - As shown in Figure G, use the supplied key to lock back the dispenser.

Step 8 - After installation, liquid may not dispense immediately. Press the push button several times until the liquid comes out.

Priming the Pump

After completion of mounting installation above, you will need to prime the pump. To do this, you need to:

- 1) Hold the pump button in.
- 2) Place your finger over the spout of pump to block the airflow into the pump. This will create a slight vacuum once the button is released.
- 3) Keep your finger on the spout and release the pump button, repeat until you have a continuous flow of liquid. You may have to repeat this process a few times especially when filled with thick liquids.

Bathroom cleaners and sprays often contain damaging abrasives and can be corrosive to the surface of your dispenser. The best method for cleaning this dispenser is using IMEC MF40 microfiber cloth and IMEC 556 Sanitise. If you find the chamber is dirty or has debris internally, rinse the chamber with warm water and replace contents. If the dispenser has not been used for a long time, the liquid may have solidified. Please rinse the chamber with warm water and replace contents.